



GIVING OUR STUDENTS ROOTS AND WINGS

Education Plan



2023-2024



Principal's Message

Eagle Butte continues to be an innovative school, with new and exciting programming. I look forward to enhancing what has been built and developing new and innovative ways to meet the diverse needs of our students. Through the lens of Engaging Minds, Kindling Hearts and Forging futures, the staff is committed to working together to ensure that Eagle Butte is a leader in academics and inspiring success in our students..

Principal, Rocheal Howes

Eagle Butte School Council



Board Chair: Carrie Palmer

Board Vice Chair: Stacey McBain

Jacquie Bechtold

Stacey McBain

Melissa Creighton

Sharla Lindsay

Amy Grant

Brandy Payeur

Cheryl Robinson

Amy Dean

Tammy Burgevitz

EBHS School Profile

School Address: 1150 Eagle Butte Road , Dunmore, Alberta

School Phone Number: (403) 528-1996



Student enrollment 500
Grades 10-12



24

Self identified First Nations Metis Inuit students



7

English language learners (ESL)



29.5

Full-time equivalent certified teachers



7

Full-time equivalent support staff



14

Number of buses to the school

Our Vision

Giving our students roots to know where home is, wings to fly away and exercise what's been taught them

Our Mission

We unleash potential through a culture of learning.





Stakeholder Engagement

Summary of how your school engaged stakeholders throughout the year.

Parents and School Council

- School Council meetings
- School Messenger
- Social Media
- Monthly Newsletters

Teachers

- Surveys
- Staff Meetings
- SI days

Support Staff

- Surveys
- Staff Meetings
- SI days
- Presentations from ILT

Students

- Surveys
- Student Representatives from all TAGS working together to create a school culture around student voice

Community Groups

- Collaborate with Dunmore Community Group Community through the Impact Grant
- connect EBHS students together with the Eagle Butte Community
- Build on the relationships with Cypress County Fire Station and Super T

Assurance Framework

What is the Assurance Framework?

In the Assurance Framework, all education stakeholders accept responsibility for building capacity of the education system — in classrooms, schools, school authorities and in government. Ensuring continuous improvement throughout the system necessitates a collective approach that recognizes diversity within Alberta, relies on evidence to make decisions, and is responsive to the needs of students in their local contexts.

The Five Domains of Assurance

Student Growth and Achievement

Teaching and Leading

Learning Supports

Governance

Local and Societal Context

Assurance in the education system happens when community members, system stakeholders and education partners engage across the five domains.

Source: 2022 Funding Manual for School Authorities

Result Driven Decision-Making

DOMAIN 1: Student Growth and Achievement

Student Learning Engagement
Citizenship
3-Yr High School Completion Rate
5-Yr High School Completion Rate

Diploma Acceptable
Diploma Excellence

DOMAIN 2: Teaching and Leading

Education Quality

DOMAIN 3: Learning Supports

Welcoming, Caring, Respectful and Safe Learning Environments
Access to Supports and Services

DOMAIN 4: Governance

Parental Involvement

DOMAIN 5: Local and Societal Context

Prairie Rose Possibilities

Eagle Butte continues to grow and develop our flight and hockey academies
Build Back to Business as a Prairie Rose Possibility

Numbers based on the Spring 2022 Accountability Pillar Results.

Assurance Data



Assurance Domain	Measure	Eagle Butte High School			Alberta			Measure Evaluation		
		Current Result	Prev Year Result	Prev 3 Year Average	Current Result	Prev Year Result	Prev 3 Year Average	Achievement	Improvement	Overall
Student Growth and Achievement	Student Learning Engagement	82.2	85.2	85.2	84.4	85.1	85.1	n/a	Maintained	n/a
	Citizenship	81.3	79.1	80.2	80.3	81.4	82.3	Very High	Maintained	Excellent
	3-year High School Completion	89.4	90.8	92.1	80.7	83.2	82.3	Very High	Maintained	Excellent
	5-year High School Completion	96.8	92.4	94.0	88.6	87.1	86.2	Very High	Improved	Excellent
	PAT: Acceptable	n/a	n/a	n/a	n/a	67.3	n/a	n/a	n/a	n/a
	PAT: Excellence	n/a	n/a	n/a	n/a	18.0	n/a	n/a	n/a	n/a
	Diploma: Acceptable	n/a	75.5	n/a	n/a	75.2	n/a	n/a	n/a	n/a
	Diploma: Excellence	n/a	12.2	n/a	n/a	18.2	n/a	n/a	n/a	n/a
Teaching & Leading	Education Quality	84.6	88.1	89.2	88.1	89.0	89.7	Intermediate	Declined	Issue
Learning Supports	Welcoming, Caring, Respectful and Safe Learning Environments (WCRSLE)	87.2	86.1	86.1	84.7	86.1	86.1	n/a	Maintained	n/a
	Access to Supports and Services	80.9	85.3	85.3	80.6	81.6	81.6	n/a	Declined	n/a
Governance	Parental Involvement	73.3	78.8	79.8	79.1	78.8	80.3	Low	Maintained	Issue

Prairie Rose Core Principles

Connect

School structures and traditions ensure that every student, staff and community member is known and cared for and contributions are celebrated.

Create

Students and PRPS staff undertake tasks that require perseverance, craftsmanship, imagination and self-discipline to foster curiosity about the world.

Commitment

Words have tremendous power and ours will be characterized by mutual respect, belonging, and community building. Students and PRPS staff use communication skills to advocate for themselves, understand their communities and tackle the world's biggest challenges.

Care

Students and PRPS staff have the knowledge of how to care for their physical and mental health and support the well-being of others fostering a safe school environment.

Contribute

Students and PRPS staff are strengthened by acts of consequential service to others, actively ensure all belong, and participate and celebrate their rural communities.

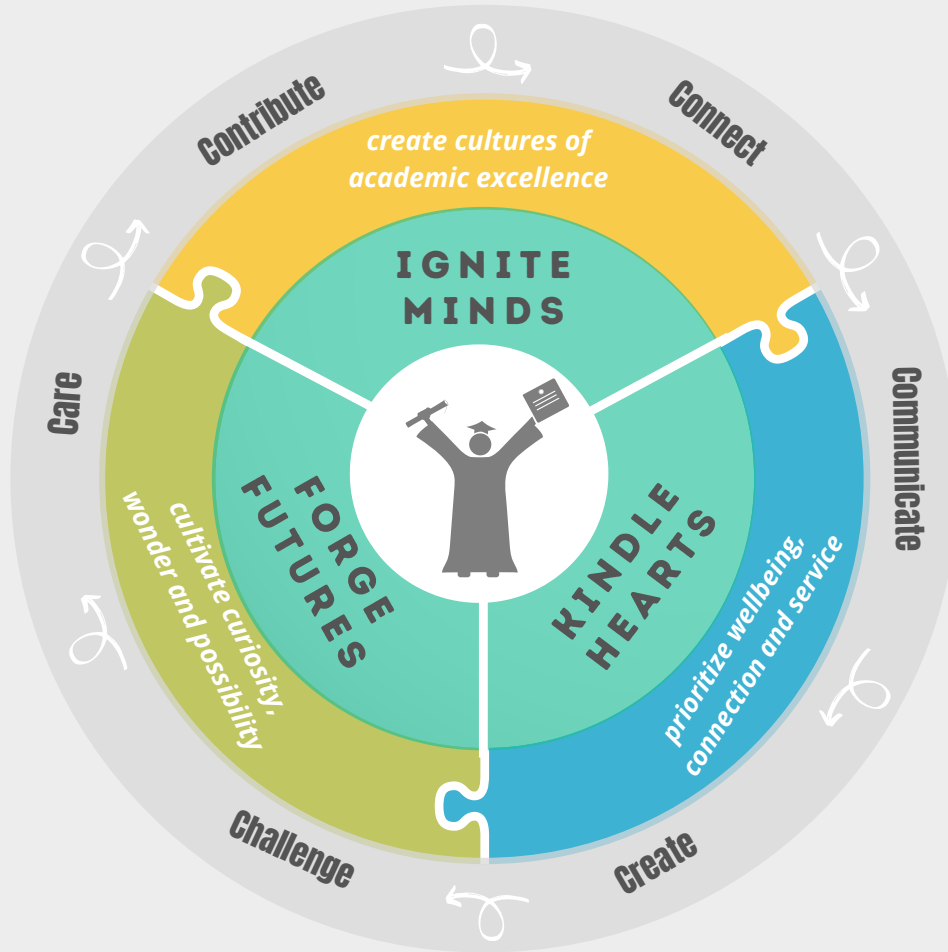
Challenge

Students and PRPS staff develop an internal drive and desire to overcome obstacles and maximize performance through personal responsibility, resilience and initiative.



Prairie Rose Public Schools Learning Model

Ignite Minds Kindle Hearts Forge Futures



PRPS GOAL 1: IGNITE MINDS

Background: We will ignite minds by creating cultures of academic excellence

- Conceptual understanding, deeper learning and transfer are evident at Eagle Butte
- Students have the background knowledge they need to be grounded, the scaffolding they need to be supported and the academic courage they need to explore possibilities
- All students have the foundational knowledge in literacy and numeracy from which deeper learning grows
- PRPS Core Principles are evident in the intellectual and academic pursuits of students and staff

PRPS GOAL 2: KINDLE HEARTS

Background: We will kindle hearts by prioritizing wellbeing, belonging and service.

- Staff and students take care of themselves and others
- Staff and students engage, contribute and create belonging
- Environments are cultivated that inspire people to show up as their best selves
- PRPS Core Principles are evident in our culture

PRPS GOAL 3: FORGE FUTURES

Background: Futures will be forged by cultivating wonder and possibilities.

- We offer programming and instruction that stretch what staff and students thought possible and sets PRPS apart
- Students are engaged, motivated and resilient
- Future prospects for PRPS students are abundant
- PRPS Core Principles are evident in the initiatives and endeavors of students and staff
- PRPS provides personalized, place based and multiple pathways to meet the diverse needs of families
- Empower students to be confident communicators in a variety of formats
- Strong partnerships with the families, businesses, nonprofits, and local government in the communities we serve

The full PRPS Education Plan can be found here: [Link to the Plan](#)

PRPS GOAL 1: IGNITE MINDS

Background: We will ignite minds by creating cultures of academic excellence

SCHOOL BASED STRATEGIES

- Continue to develop and grow programming that reaches students interests and future goals through academies, experiential learning and connections to the community
- Ensure we are creating exceptional environments for all learning
- Provide opportunities to connect to the community and show students how their learning connects to real life
- Utilize research based strategies in all classrooms that strongly reflect our past focus on deeper learning
- SI days will focus on professional conversations that support the growth of the staff and students through the CRM model

SCHOOL BASED PERFORMANCE MEASURES

- Staff and student surveys
- Department meetings will be carried out with norms, goals, strategies and accountability. The focus will be on sharing of work and common assessments
- TAG Learning Opportunities - support reflection, metacognition, character building, and school spirit through portfolios
- Continue looking for ways to create innovation in all classes
- Exhibition of Learning will showcase our work in Igniting Minds

“ I work of excellence is transformational. Once a student sees that he or she is capable of excellence, that student is never quite the same. There is a new self-image, a new notion of possibility. There is an appetite for excellence. ”

Source: Ron Berger - *An Ethic of Excellence: Building a Culture of Excellence*

“ Reflection is an excellent opportunity for students to articulate their learning in a meaningful way ”

Source: Teacher at Eagle Butte

PRPS GOAL 2: KINDLE HEARTS

Background: We will Kindle Hearts by prioritizing wellbeing, belonging and service.

SCHOOL BASED STRATEGIES

- Continue to use TAG as a place to connect with students and build reflection strategies and character building
- Create spaces, events and activities that build school culture, spirit and a sense of belonging

SCHOOL BASED PERFORMANCE MEASURES

- Student Surveys
- Assemblies/activities that build school spirit and culture in order to Kindle the Hearts of the Eagle Butte community
- Exhibition of Learning - CTS Night and student portfolios will be created
- Create a Community Service Group focused on Connecting to Eagle Butte communities

“

I really appreciate that students have a TAG teacher through the 3 years at Eagle Butte, as this is the person I feel my children would go to if they had concerns.

”

Source: Parent from Assurance Survey

“

Eagle Butte is an excellent school with very caring teachers.

”

Source: Parent from Assurance Survey

PRPS GOAL 3: FORGE FUTURES

Background: Futures will be forged by cultivating wonder and possibilities.

SCHOOL BASED STRATEGIES

- Grow South Alberta Fire and Rescue and STEM Collegiate as new Prairie Rose Possibilities
- Enhance social media to share the work we are doing
- Build and grow strong partnerships with stakeholders
- Commitment to foster and support self actualization in our students and their motivation to achieve their highest level of personal fulfillment
- Continue to grow RAP, Work Experience, Green Certificate, Health Care Aire and Dual Credit programming

SCHOOL BASED PERFORMANCE MEASURES

- Continue to grow current Prairie Rose Possibilities and establish and develop new ones
- Enhance Eagle Butte presence in feeder schools and towns through sports, programming, the arts and academics
- Support student engagement in leadership opportunities through the development of our new SRC program
- Alumni speaker series on various careers and future possibilities

“

Sciences have more hands on labs. This is to experience a feeling like working in the field.

”

Source: Student from Assurance Survey

“

Building active accountability for students through weekly planning check-ins and integrating personalized study strategies as they plan their work time throughout the week.

”

Source: Teacher at Eagle Butte

PRPS Goal #4: Truth and Reconciliation



SCHOOL BASED STRATEGIES

- Work with district FNMI director to bring opportunities to classes and assemblies
- Ensure that content is integrated authentically into classrooms
- Build relationships with Elders and local organizations and community members
- Continue to engage the Eagle Butte Community through a book study

OUTCOMES

- School-wide Truth and Reconciliation learning in the weeks around September 30
- Truth and Reconciliation speaker to the school on September 28

Supporting English as a Second Language Learners



SCHOOL BASED STRATEGIES

- Build relationships and culturally responsive and relevant pedagogy to support cultural identities of learners and their families
- Provide translation supports whenever necessary
- Utilize accommodated assessments so that students are better able to demonstrate their learning
- Continue to grow the International Student Program

Budgeting Priorities

2023-2024 Budget Summary

Eagle Butte School creates a budget in alignment with division priorities to drive academic excellence, social and emotional wellbeing, and deeper learning while addressing the operational needs of the school. Teaching and Learning is the area the majority of our resources are utilized with the following priorities guiding our budgetary process:

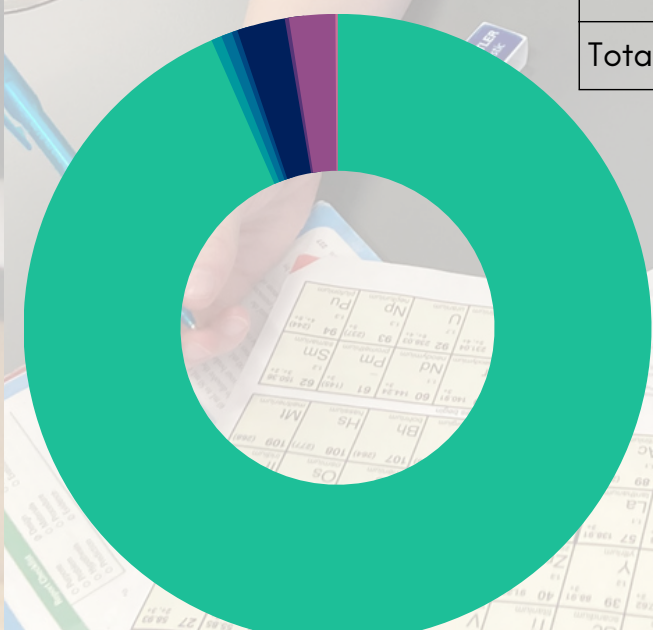
- ✓ Classroom supports
- ✓ Student, staff and community wellbeing
- ✓ Educational opportunities

Eagle Butte School Budget 2022-2023

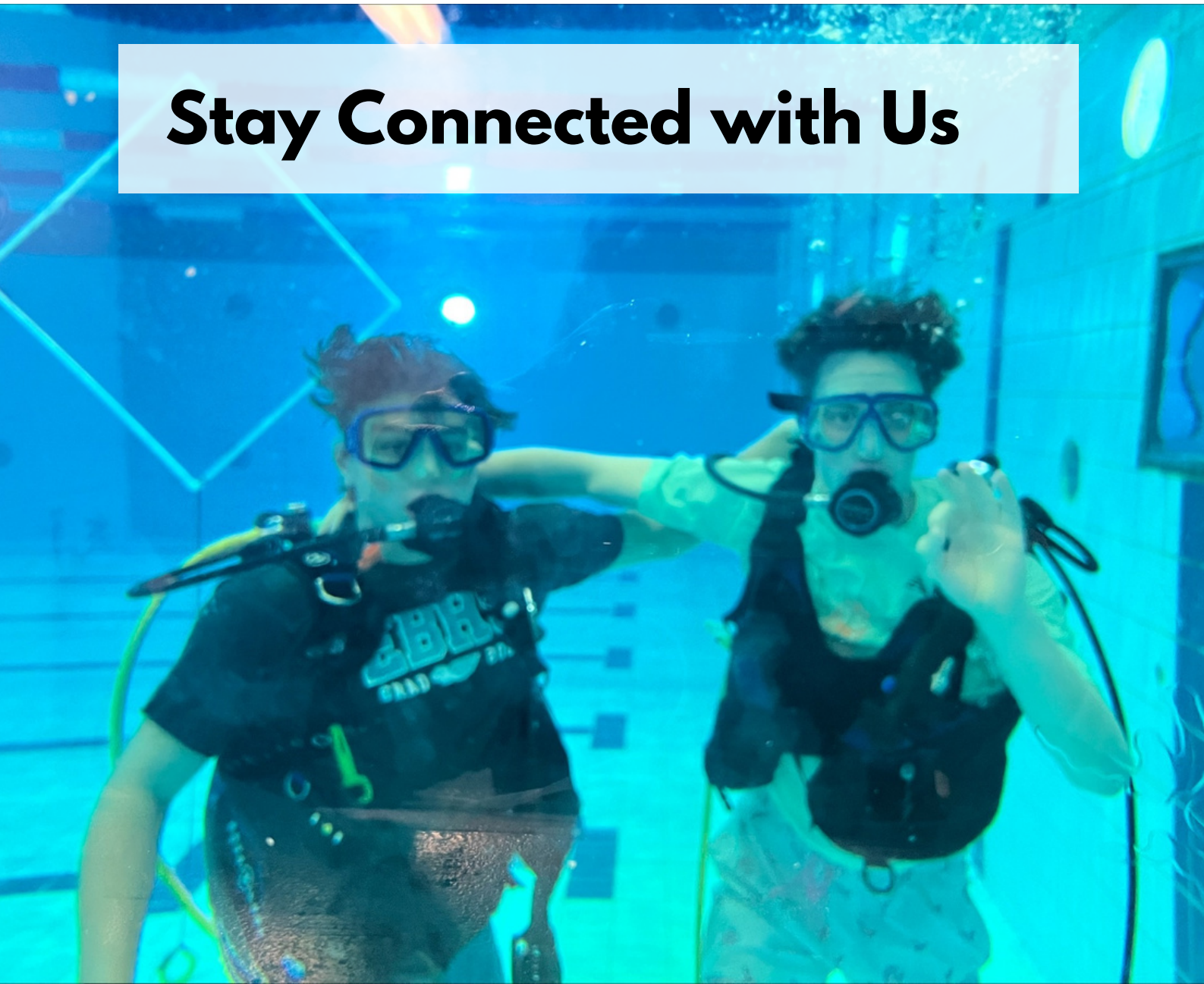
	Total Amount
Staffing Purchased	\$3,014,662
Professional Development	\$17,500
Sub Costs	\$18,100
Furniture and Equipment	\$9,600
Supplies	\$80,000
Text Books and Library Books	\$6,800
Field Trips	\$3,500
Curriculum Areas	\$76,625
Total Expenses Budgeted	\$3,226,787

Supplies
2.5%

Staffing Purchased
93.4%



Stay Connected with Us



http://



www.eaglebutte.myprps.com/



@EagleButtePRSD8



@EagleButtePRSD8



@EagleButtePRSD8